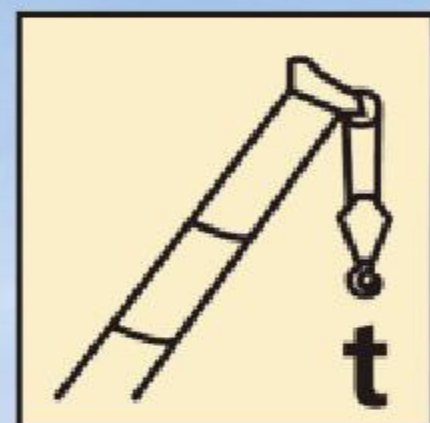
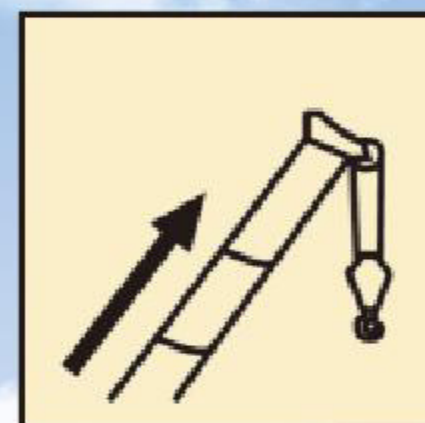




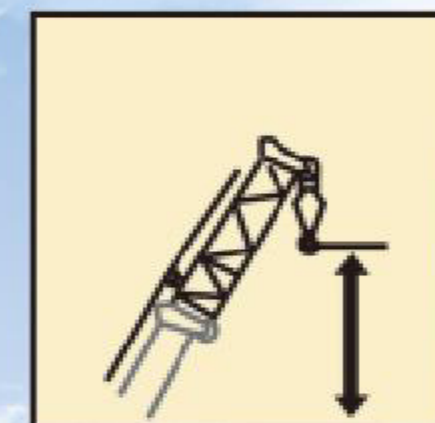
XCT25L4_Y Truck Crane



25 t



34 m



43.2 m



汽车起重机 2020年03月02版

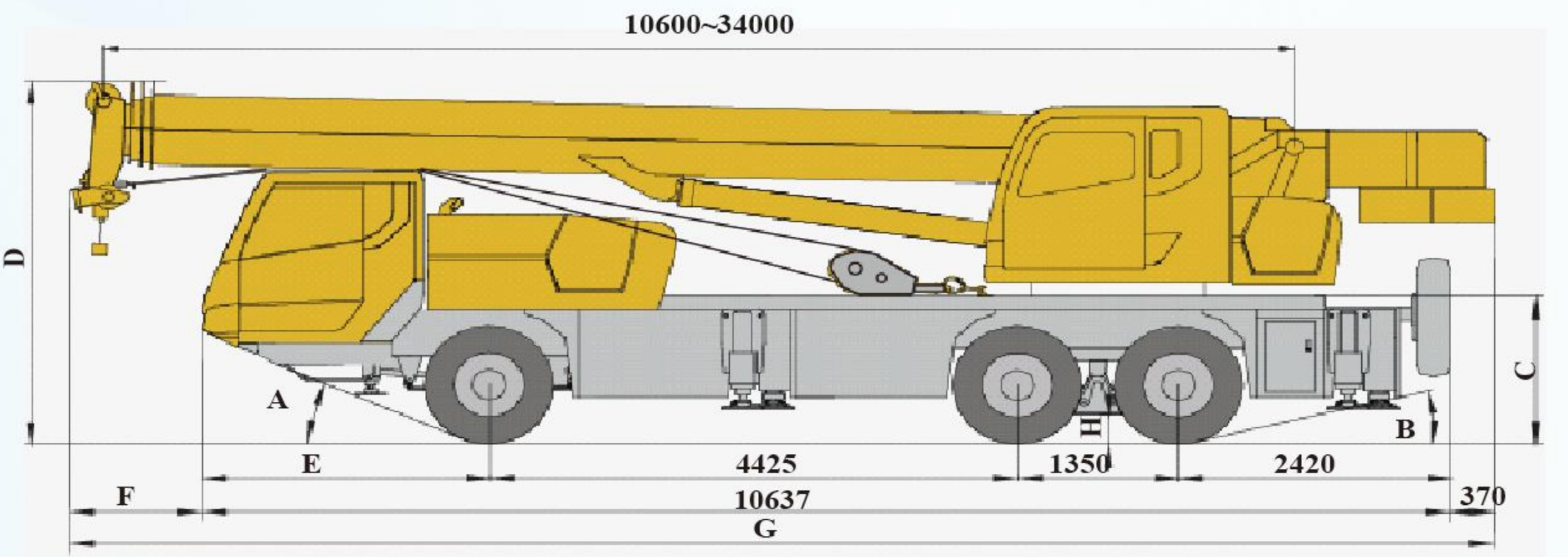
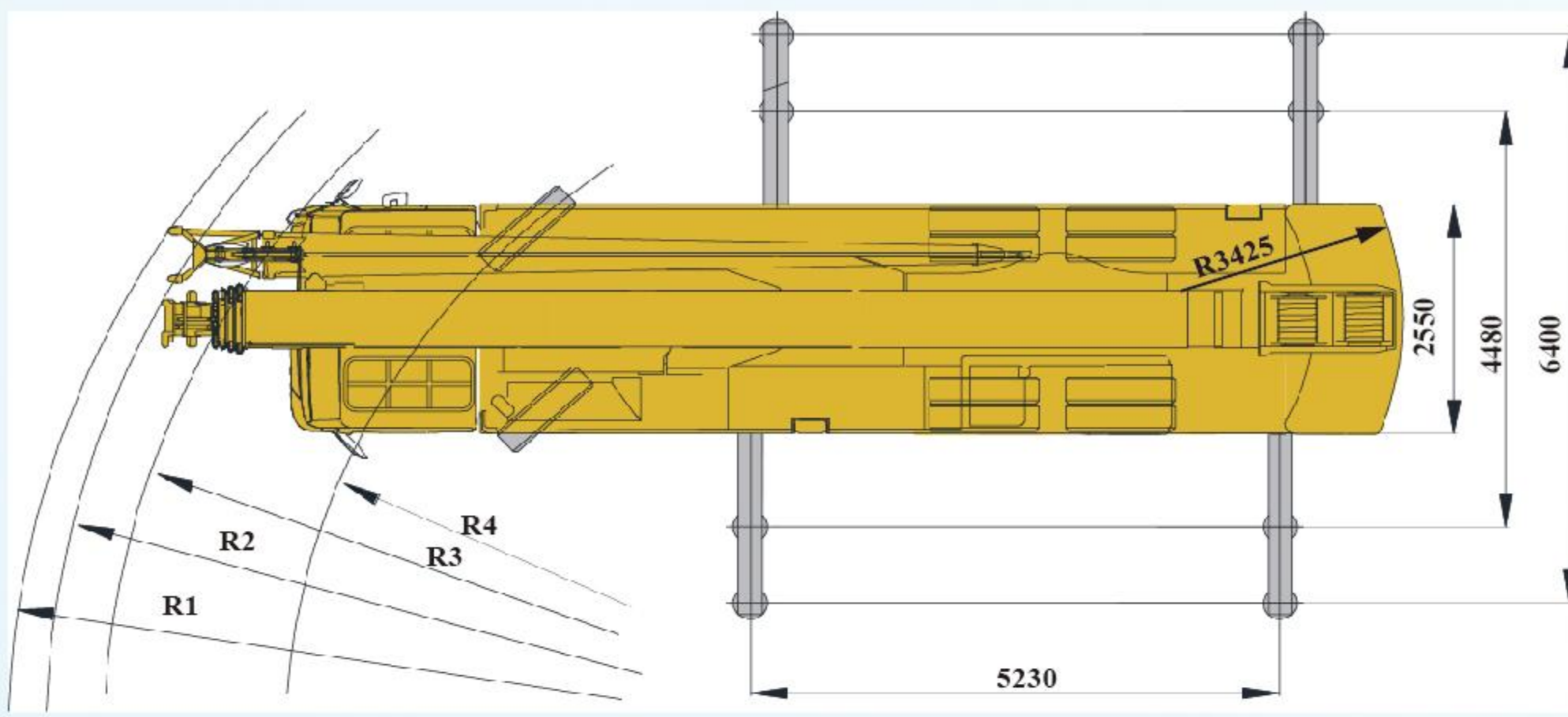
HANLINK MOBILITY TANZANIA  Julius K. Nyerere Road, Dar es Salaam



+255 758 301 399 | +255 764 228 228

Email: benny@hanlinkgroups.com

kai.you@hanlink.com



技术规格 Technical specifications

Chassis			
Frame	Designed and manufactured by XCMG, it is made of high strength steel with fully covered walking surface and anti-torsion box-typed structure.	●	Right-hand drive
Outriggers	Four outriggers arranged in H-shape are hydraulically controlled by control levers. There is an outrigger control station located at each side of the chassis, and there is a level gauge on each control station. The outrigger movements can be simultaneously or separately controlled at any side of the chassis. There is a check valve fitted in each outrigger cylinder, and a double-way hydraulic valve fitted in each jack cylinder. Fifth jack is equipped. Longitudinal × lateral (fully-extended): 5.23 m × 6.40 m Outrigger float diameter: φ400 mm 5th jack float diameter: φ260 mm Reaction force of outrigger at max. lifting load: 326 kN	●	Left-hand drive
Engine	SC7H260Q3, in-line, 6-cylinder, supercharged, intercooled diesel engine, made by Shanghai Diesel Engine, with rated power of 192 kW/2200 rpm, max. torque of 1000 Nm/1400 rpm, compliant with China III emission standard. Fuel tank capacity: 240 L. SC7H260Q5, in-line, 6-cylinder, supercharged, intercooled diesel engine, made by Shanghai Diesel Engine, with rated power of 192 kW/2300 rpm, max. torque of 1000 Nm/1200 ~ 1600 rpm, compliant with China V emission standard. Fuel tank capacity: 240 L.	●	Right-hand drive
Transmission	Mechanical transmission with a synchronizer, made by Shaanxi Fast Gear Co., Ltd., 8-forward speed and 2-reverse speed.	●	Left-hand drive
Axles	Three-axle chassis, Meritor single-stage reduction axle 3-axle chassis with HANDE single reduction axle., with reliable performance.	●	Right-hand drive
Tires	11.00-20, suitable for heavy load vehicles, strong commonality. Tire specifications: 11.00 R20	●	Left-hand drive
Suspensions	Leaf springs with tapered cross-section are adopted for front suspensions, light dead weight and low noise; rubber spring suspensions with V-type push rods are adopted for rear axles, light dead weight and free of maintenance. Less leaf springs with tapered cross-section are adopted for front suspension, light dead weight, low noise and great comfort; the rear suspension adopts leaf springs and balance beam with V-type push rods. The leaf spring and balance beam assembly are the bearing parts as well as the guiding parts, which are used to position the axles together with V-type push rods and thus the misalignment of the middle and rear axles can be avoided.	●	Right-hand drive
Brakes	Double-circuit, air pressure brake, drum brake. Service brake: double-circuit air pressure brake acting on all wheels. Parking brake: air-release brake, acting on wheels of axles 2-3. Auxiliary brake: engine exhaust brake, which is safe and reliable, and will prolong the service life of brake lining.	●	Left-hand drive
Steering	Mechanically steering mechanism with a hydraulic booster	●	Right-hand drive
Driver's cab	New type, steel, full dimension cab with 4-point connecting structure, has swing-out doors at both sides. Manually adjustable driver's seat in height is available. A simple sleeper for the co-driver's seat is installed to supply comfort and reduce fatigue. The cab has better thermal insulation effect. Safety glass, electrically operated door window lifters, electrically adjusted mirrors make operation convenient and safe. Steering wheel is adjustable in height and angle. Heater and Air conditioner is standard.	●	Left-hand drive
Electrical system	24 V DC, two sets of 12 V battery in series. Generator output voltage is 28±0.3 V, and output current is 70 A.	●	Right-hand drive
Safety devices	Double-way hydraulic valve ABS Yellow reflecting marking.	● ○ ○	Right-hand drive

主要技术参数表 Table of main technical parameters

类别 Category	项目 Item	单位 Unit	参数Parameter		
			右驾 Right-hand drive	左驾 Left-hand drive	
尺寸参数 Dimensions	外形尺寸 (长×宽×高) Dimensions (length×width×height)	mm	12535 × 2550 × 3420 (侧置副臂 Swing-away jib) 12942 × 2550 × 3920 (腹置副臂 Under lung jib)	12535 × 2550 × 3420	
	轴距 Wheel base	mm	4425+1350	4425+1350	
	轮距 (前/后) Track (Front/ Rear)	mm	2055/1834	2027/1834	
	前悬/后悬 Front/ Rear overhang	mm	2442/2420	2442/2420	
	前伸/后伸 Front/ Rear extension	mm	1528/370 (侧置副臂 Swing-away jib) 1935/370 (腹置副臂 Under lung jib)	1528/370	
	重量参数 Weight	最大允许总质量 最大允许总质量 Total vehicle mass in travel configuration	kg	27500	27500
轴荷 Axle load		一轴 1st axle	kg	5900	5900
		二轴 2nd axle	kg	10800	10800
		三轴 3rd axle	kg	10800	10800
动力参数 Power	发动机型号 Engine model	—	SC7H260Q3	SC7H260Q5	
	额定功率/转速 Engine rated power/rpm	kW/(r/min)	192/2200	192/2300	
	最大净功率/转速 Max. net power/rpm	kW/(r/min)	188/2200	188/2300	
行驶参数 Travel	最大输出扭矩/转速 Max. output torque/rpm	N.m/(r/min)	1000/1400	1000/1200 ~ 1600	
	最高车速 Max. travel speed	km/h	≥85	≥85	
	最低稳定车速 Min. stable travel speed	km/h	2~3	2~3	
	最小转弯直径 Min. turning diameter	m	≤20	≤20	
	臂头最小转弯直径 Min. turning diameter at boom tip	m	≤25	≤25	
	最小离地间隙 Min. ground clearance	mm	261	261	
	接近角 Approach angle	°	16.5	16.5	
	离去角 Departure angle	°	13	13	
	制动距离 (制动初速度为30km/h) Braking distance (at 30 km/h)	m	≤10	≤10	
	最大爬坡能力 Max. grade ability	%	≥42	≥42	
	百公里油耗 Fuel consumption per 100 km	L	30	30	
	噪音 Noise	加速行驶机外噪声 Exterior noise level	dB(A)	≤84	≤84
驾驶员耳旁噪声 Noise level at seated position		dB(A)	≤90	≤90	

技术规格 Technical specifications

Superstructure			
Frame	Designed and manufactured by XCMG, made of high strength steel.	●	counterweight Fixed counterweight of 4.2 t.
Hydraulic system	Constant displacement pump + load-sensing multi-way valve; with confluence technology adopted for multi-way valve, double-pump confluence can be realized when lifting, elevating or telescoping operation is carried out independently. Max. hoisting speed of main and auxiliary winches is up to 135 m/min. For simultaneous movements of main/auxiliary winch, telescoping or elevating, the two pumps supply oil separately.	●	Safety devices Hydraulic balance valve; Hydraulic relief valve; Load moment limiter; Spring centering system for control levers; Lowering limiter for preventing wire rope from over releasing; Anti-two block at boom head for preventing wire rope from over-winding; Free sliding, slewing locking and tri colored light bar. Angle indicator winch monitoring device tri colored light bar beacon lamp Yellow reflecting marking.
Operating mode	Mechanical control Pilot hydraulic proportional control through left and right levers is used for controlling the superstructure. Stepless speed regulation is available.	● Mechanical ● Pilot	Hook block 25 t hook block, 3 t hook block 20 t hook block
Main and Auxiliary winch system	Hydraulic control is used for speed regulation. The system is driven by a hydraulic motor through a planetary gear reducer, with a normally closed brake, balance valve and a grooved drum equipped. It has features of high speed with a light load and low speed with a heavy load.	●	Boom and jib system
Slewing system	Single-row, contact-ball, external tooth slewing ring, with a single slewing gear located at right side, is driven by the planetary gear reducer of slewing mechanism, which is driven by a hydraulic motor, and may continuously slew 360°. Power control or free slewing function is available, and the slewing speed may be infinitely regulated.	●	Boom Four-section boom with U-shape profile, made of high strength steel, with special anti-deformation design. Single cylinder plus ropes is used to telescope the boom. Boom length: 10.6 m ~ 34 m
Elevating system	Single cylinder with self-compensation balanced valve.	●	Single top Fitted at boom head, used for single line operation. Its lifting performance is the same as that for boom, but the maximum lifting load does not exceed 2.8 t.
Operator's cab	Ergonomically designed, with swing-out door and adjustable seat. It is equipped with safe glass and roof protective grille. Windshield is equipped with sun visor. Air conditioning is standard. Extension of control lever	● ○ Mechanical	Swing-away jib The jib consists of a connecting bracket, a rotating bracket and a foldable lattice jib. Three offset angles of 0°, 15° and 30° are available. It is stowed along the side of the boom. Fixed jib length: 8.3 m.
			Under lung jib Box-type under lung jib, with offset angles of 5°, 15° and 30°. Fixed jib length: 8.3 m.

主要技术参数表 Table of main technical parameters

类别 Category	项目 Item	单位 Unit	参数Parameter		
			右驾 Right-hand drive	左驾 Left-hand drive	
主要性能参数 Main performance	最大额定总起重量 Max. total rated lifting capacity	t	25	25	
	最小额定工作幅度 Min. rated working radius	m	3	3	
	转台尾部回转半径 Turning radius at turntable tail	mm	3425	3425	
	最大起重力矩 Max. load moment	基本臂 Base boom	kN.m	965	965
		最长主臂 Fully-extended boom	kN.m	623	623
		最长主臂+副臂 Fully-extended boom + Jib	kN.m	370	370
	支腿跨距 Outrigger span	纵向 Longitudinal	m	5.23	5.23
		横向 Lateral	m	6.4	6.4
	起升高度 Hoist height	基本臂 Base boom	m	10.9	10.9
		最长主臂 Fully-extended boom	m	34.5	34.5
		最长主臂+副臂 Fully-extended boom + Jib	m	43.2	43.2
	起重臂长度 Boom length	基本臂 Base boom	m	10.6	10.6
最长主臂 Fully-extended boom		m	34	34	
最长主臂+副臂 Fully-extended boom + Jib		m	42.3	42.3	
副臂安装角 Jib offset angle	°	0, 15, 30 (侧置副臂 Swing-away jib)		0, 15, 30	
		5, 15, 30 (腹置副臂 Under lung jib)			
工作速度参数 Working speed	起重臂起臂时间 Boom raising time	s	≤35	≤35	
	起重臂全伸时间 Boom fully extending time	s	≤53	≤53	
	最大回转速度 Max. slewing speed	r/min	≥3	≥3	
	支腿收放时间 Outrigger extending and retracting time	水平支腿 Outrigger beam	收 Retracting	s	≤20
			放 Extending	s	≤25
	垂直支腿 Outrigger jack	收 Retracting	s	≤20	≤20
		放 Extending	s	≤25	≤25
	起升速度 (单绳, 第四层, 空载) Hoisting speed (single line, 4th layer, no load)	主起升机构 Main winch	m/min	≥135	≥135
		副起升机构 Auxiliary winch	m/min	≥135	≥135
	噪声 Noise	机外辐射 Exterior noise level	dB (A)	≤120	≤120
		司机位置处 Noise level at seated position	dB (A)	≤90	≤90